



# おりゅう灯籠

【近代化遺産】

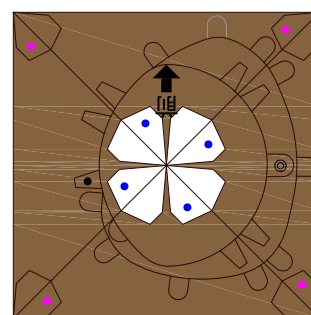
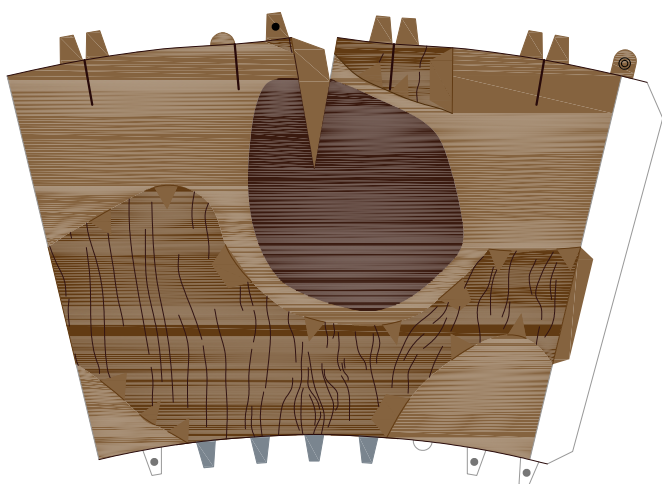
おりゅう灯籠は、正しくは船着場灯籠と言い、柳町の川沿いに立つ灯籠です。

旧藩時代の出石川は、現在よりも3倍以上川幅が広く、水量も豊富でした。年貢米をはじめ、物資輸送に30石舟が往来していたと言われています。この灯籠は夜間に遡上する舟の灯明として幕末まで役目を担っていました。

現在も、旧船着場であった大橋詰に建ち、当時の名残りを漂わせています。

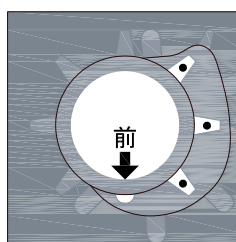
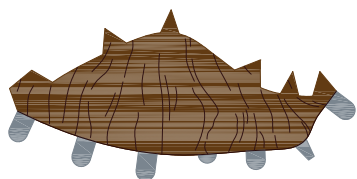


1-a



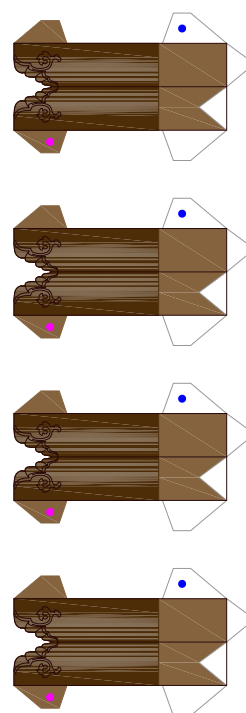
1-b

1-c

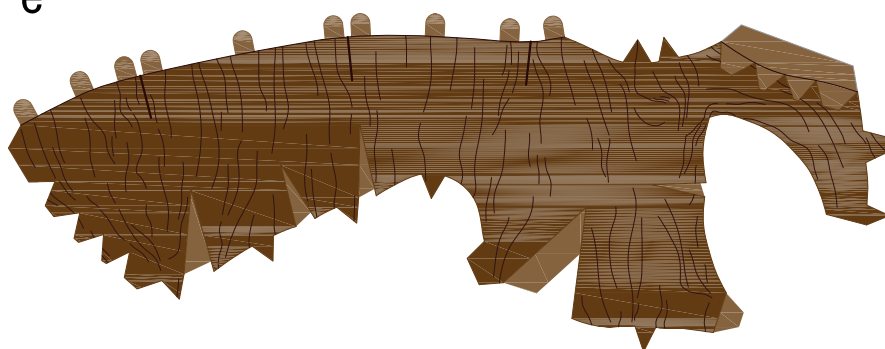


1-d

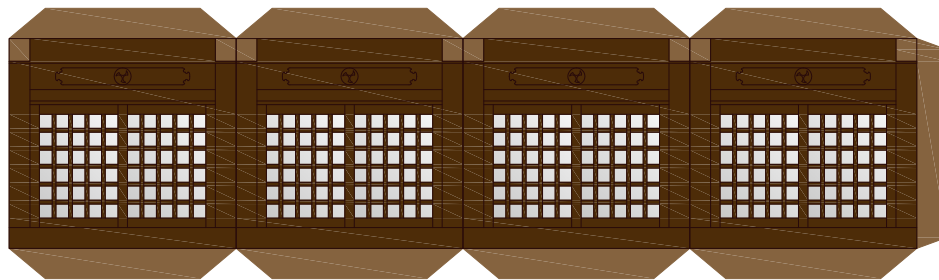
1-f



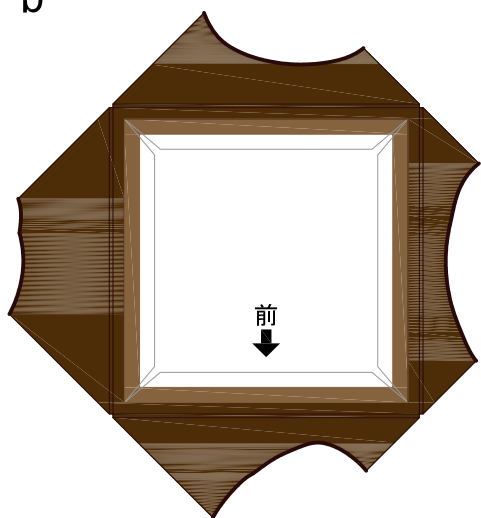
1-e



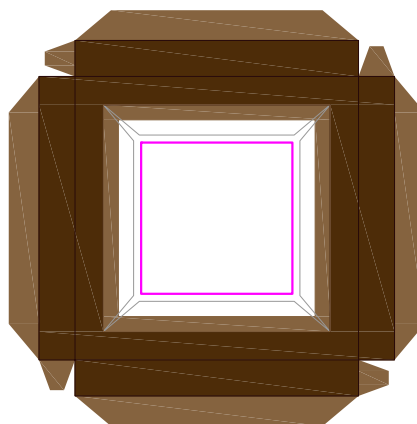
2-a



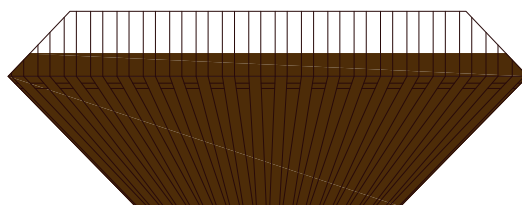
2-b



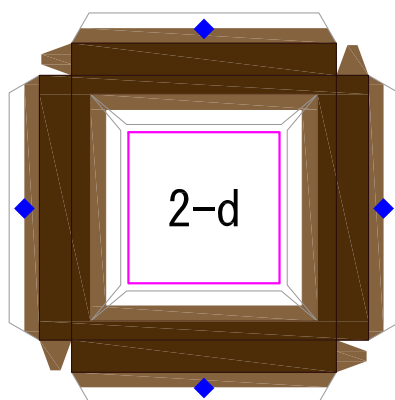
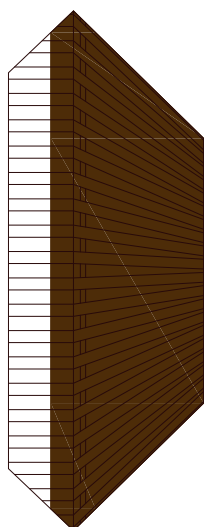
2-c



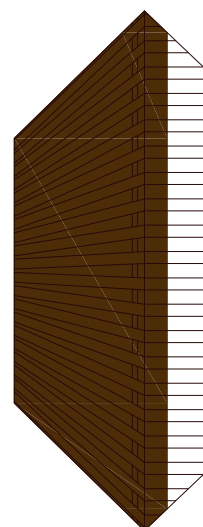
2-e



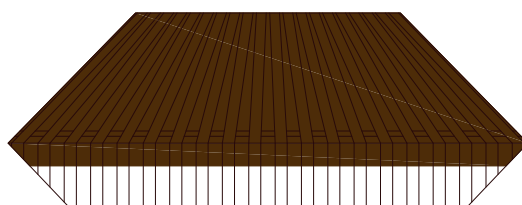
2-e



2-d

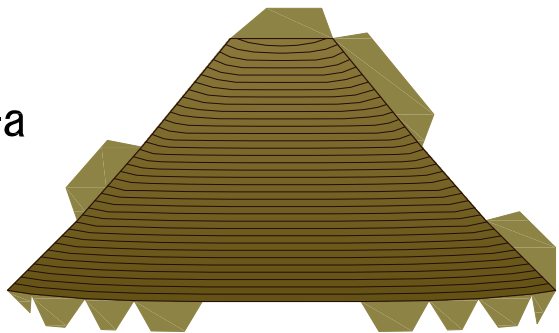


2-e

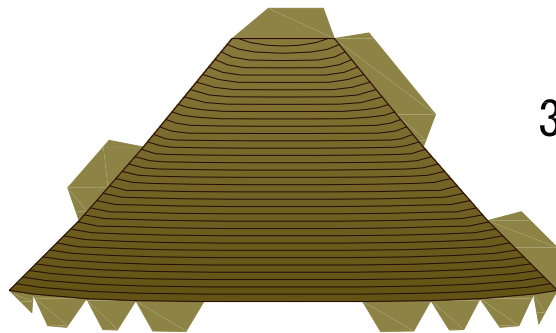


2-e

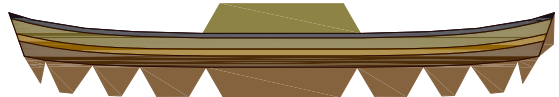
3-a



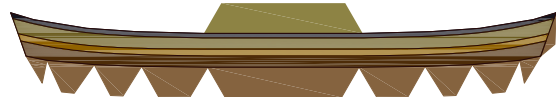
3-a



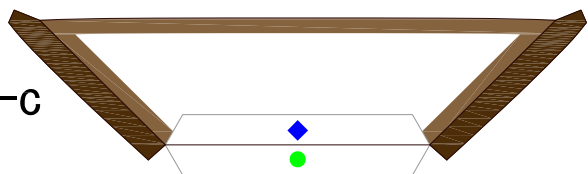
3-b



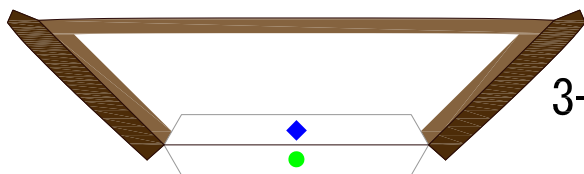
3-b



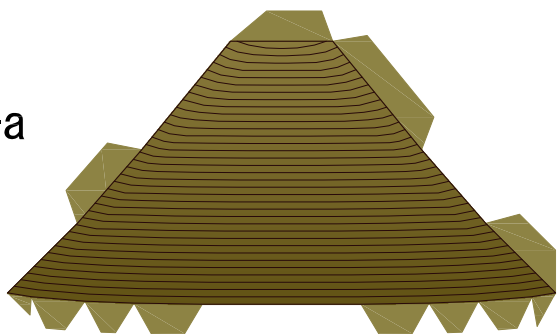
3-c



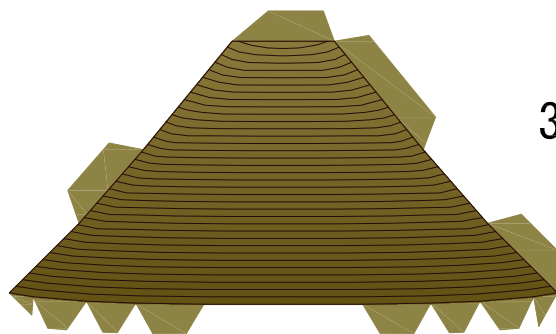
3-c



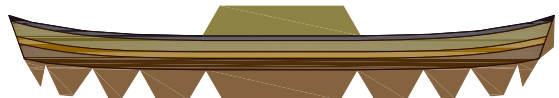
3-a



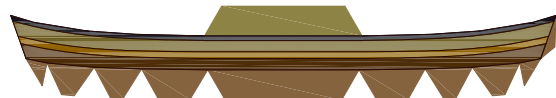
3-a



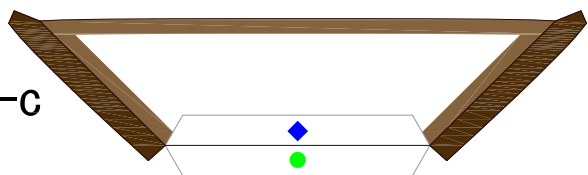
3-b



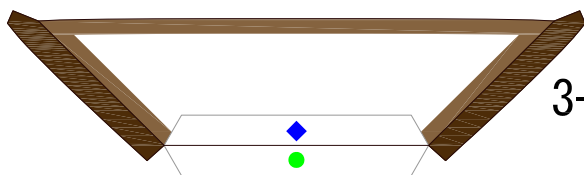
3-b



3-c



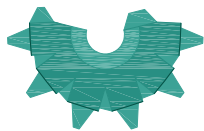
3-c



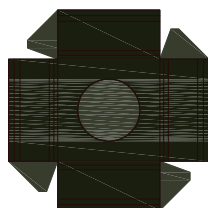
3-d



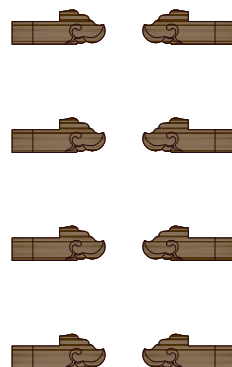
3-e



3-f



3-g



3-h

