

但馬ペーパークラフト⑦

但馬 御崎灯台

(余部埼灯台)
【建造物】

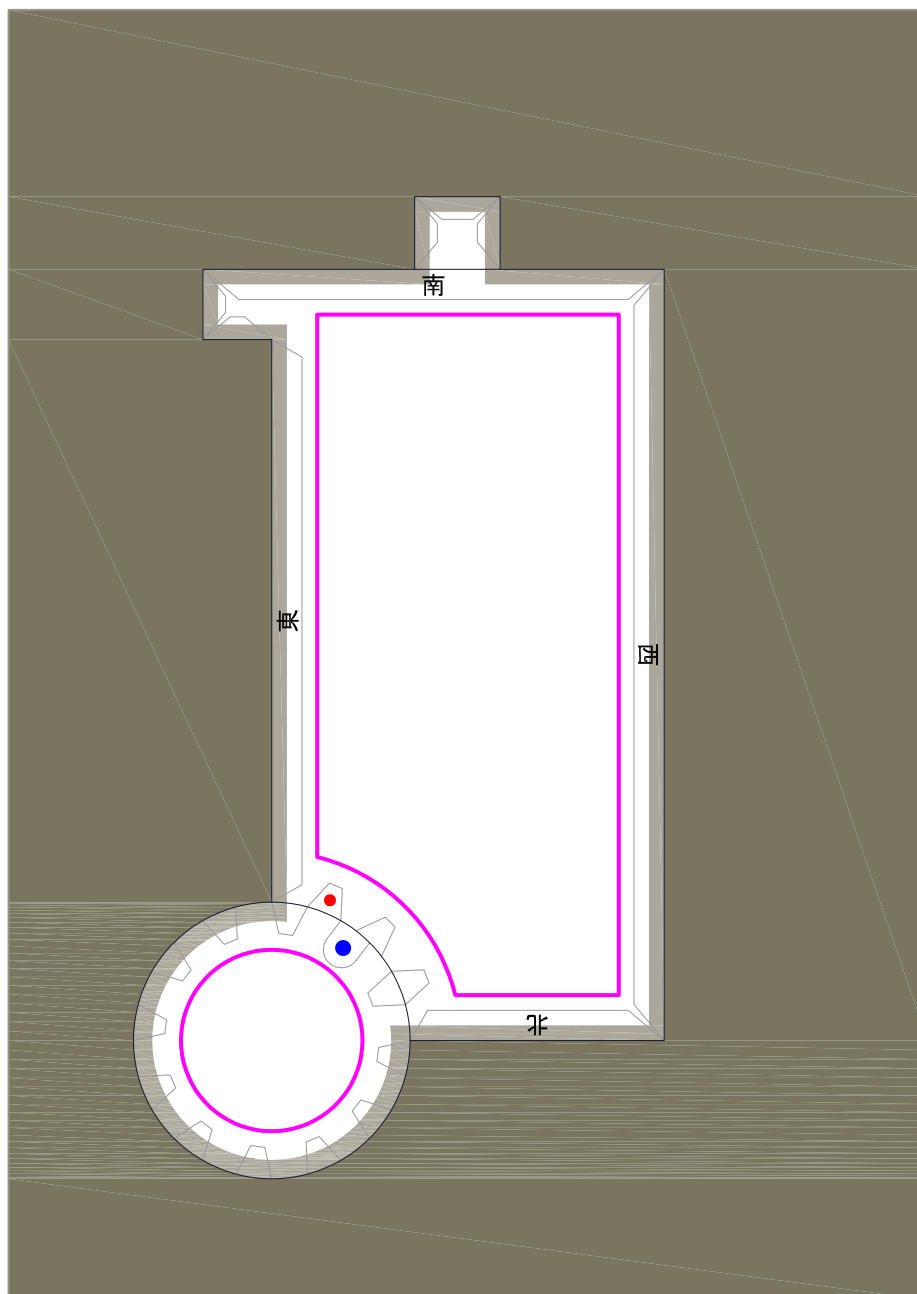
余部埼灯台は香美町香住区御崎にあり、地元では「御崎灯台」の名前で親しまれている灯台です。

建物の高さは約14mですが、標高278mに位置し、日本一の高所に建つ灯台としても有名です。

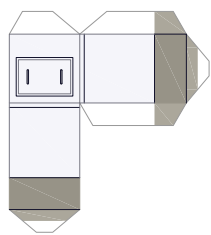
その光達距離は43kmに及び、西は鳥取県東郷町、東は経ヶ岬にまで光が達し、日々、航行の安全を見守っています。



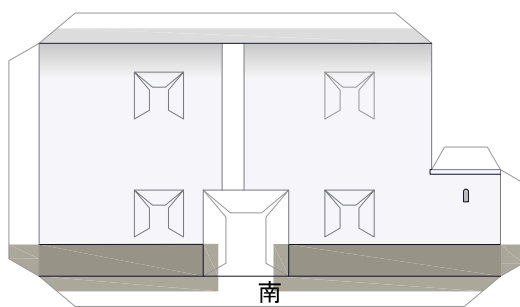
ベース



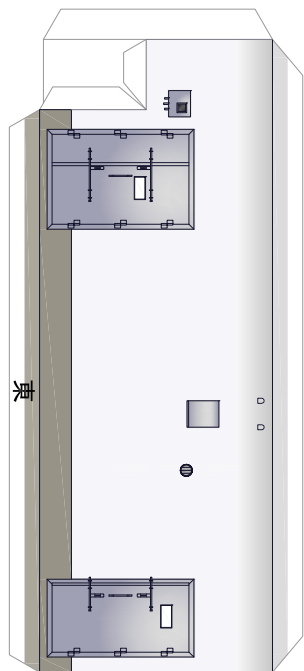
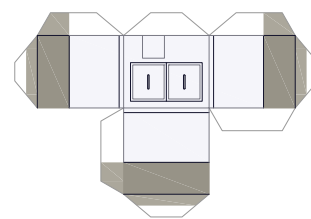
2-e



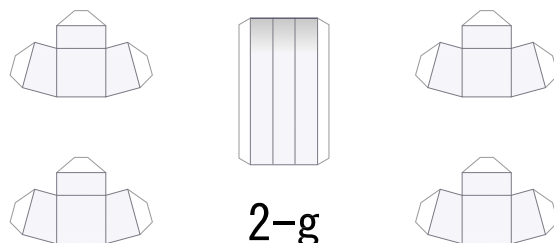
2-a



2-f

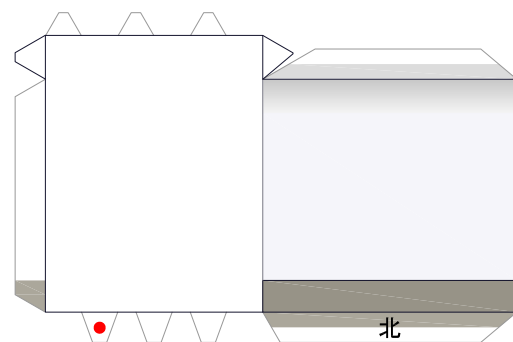
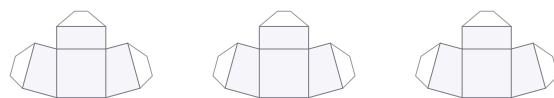


2-b

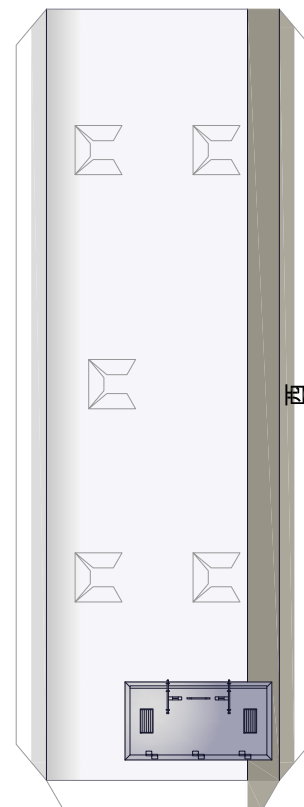


2-g

2-h

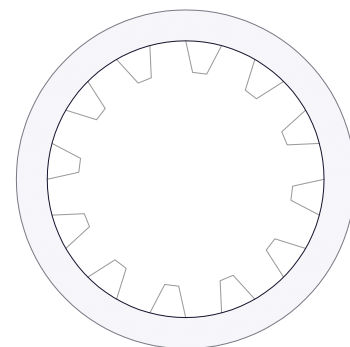


2-c



2-d

2-j

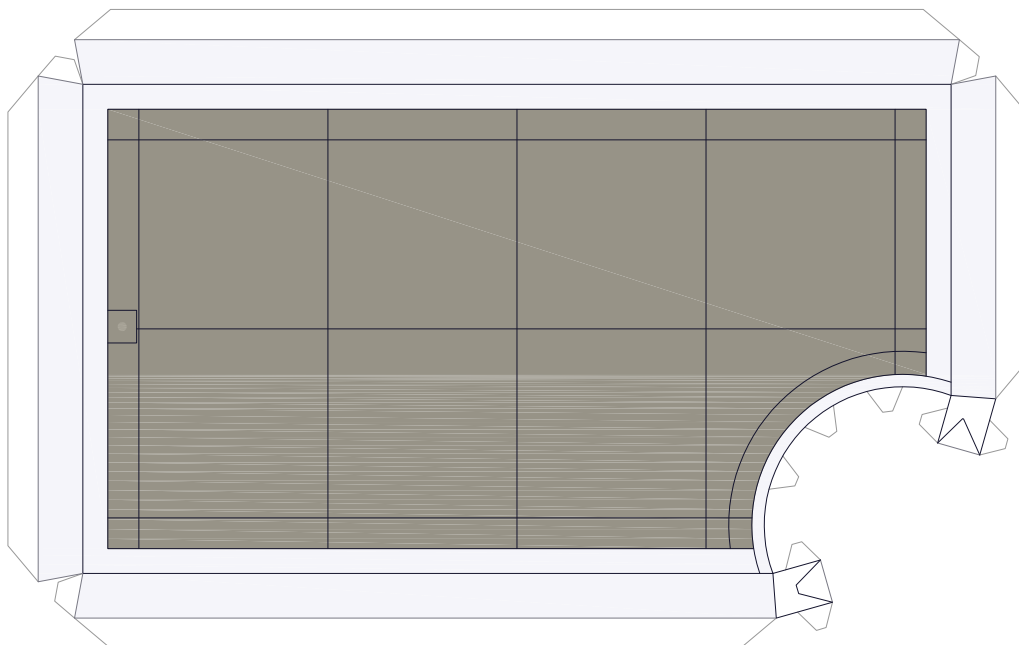


2-k

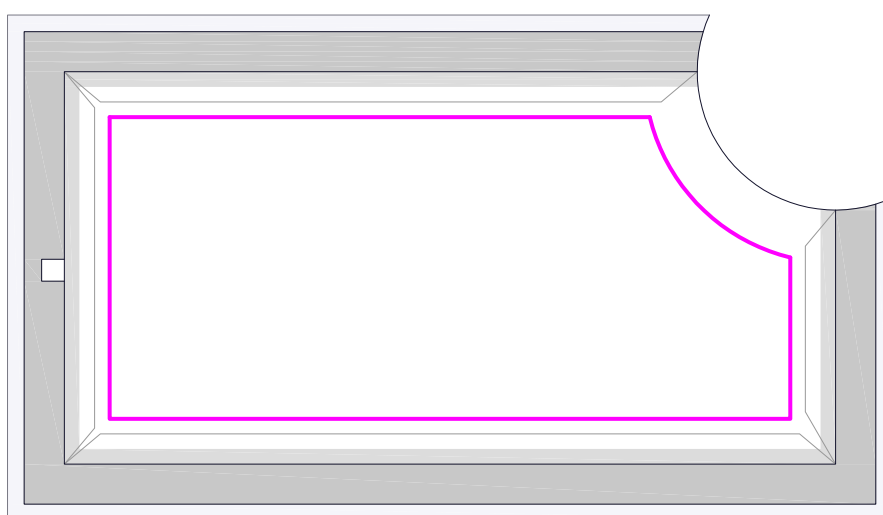


2-i

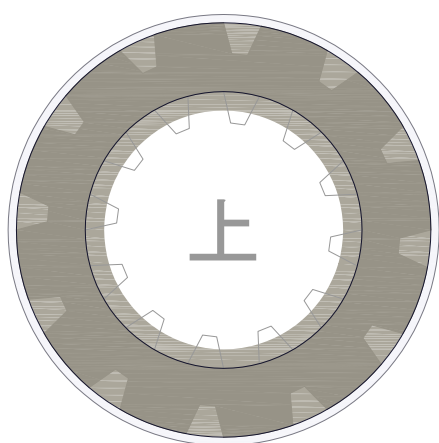
3-a



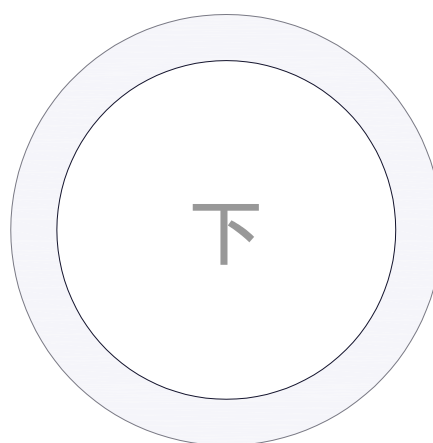
3-b



3-c



3-d



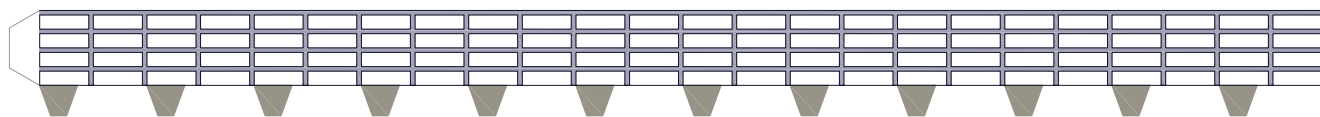
3-e



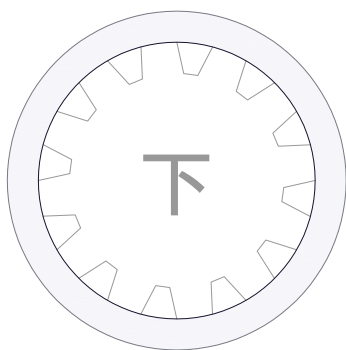
4-a



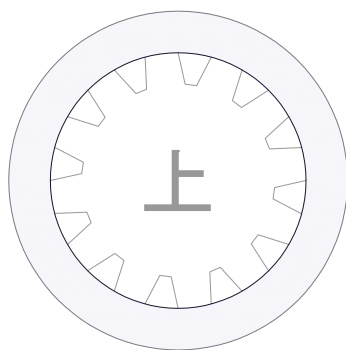
4-b



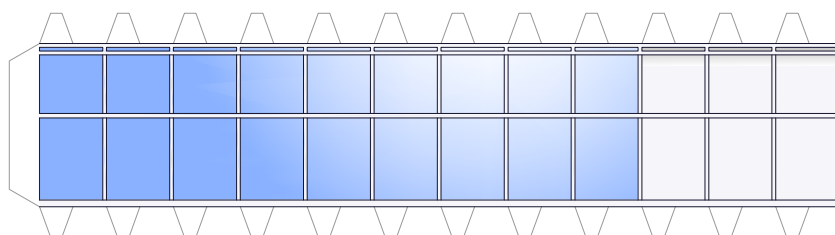
4-c



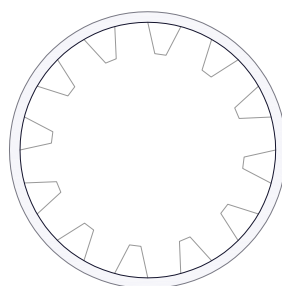
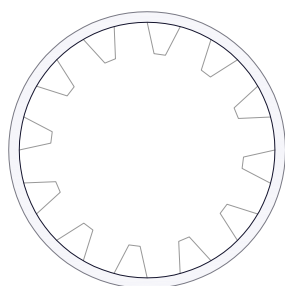
4-d



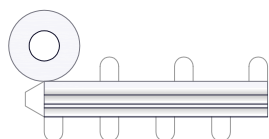
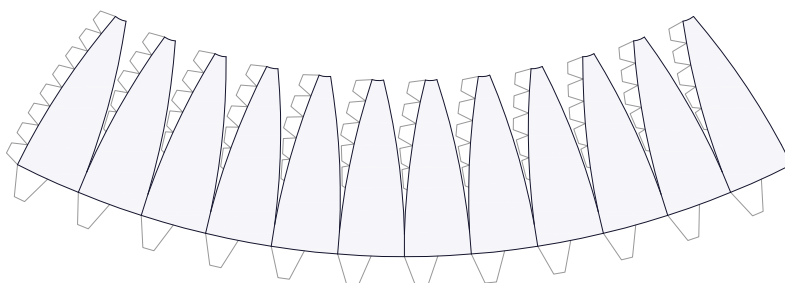
4-e



4-f



4-h



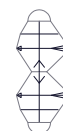
4-i



4-j



4-k



4-l