

但馬ペーパークラフト⑧

但馬

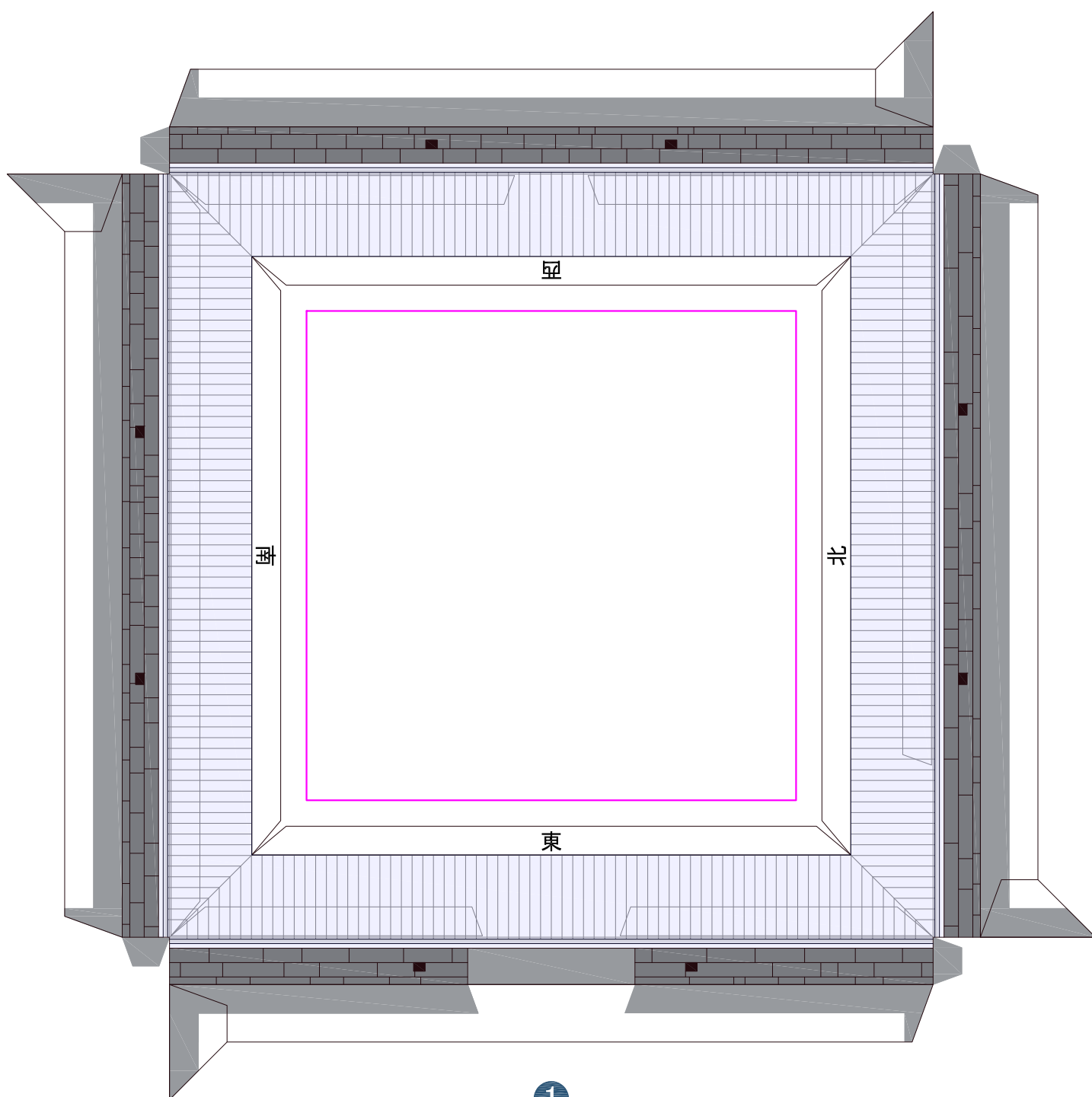
ムーセ旧居

【近代化遺産・建造物】

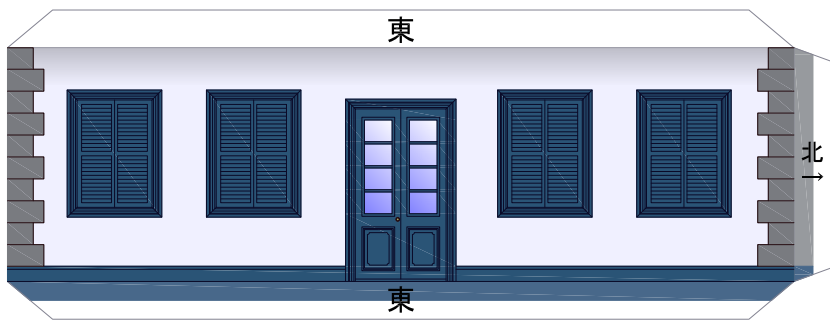


ムーセ旧居は、朝来市神子畑にある明治時代の洋風建築です。

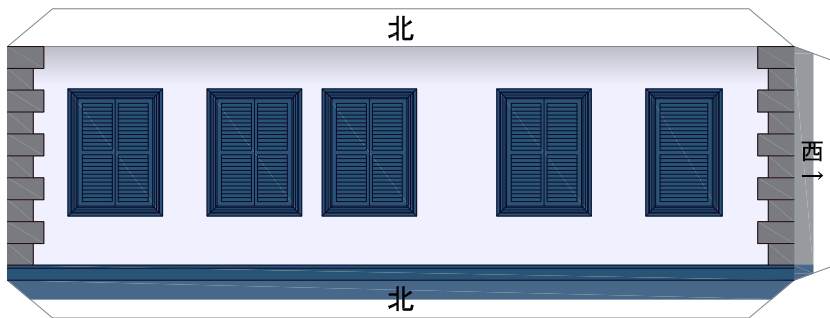
明治時代、生野銀山に招聘された外国人技師のために多くの宿舎が建設されました。ムーセ旧居はその二番館として建設され、フランス人技師ムーセ (Mouchet, Emile Theophile - ;1845~1895) が居住しました。彼の帰国後、二番館は神子畑に移築され、鉱山事務所・診療所などを経て、現在は資料館や写真館として利用されています。



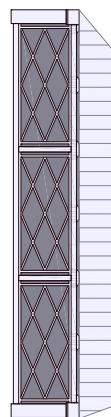
2



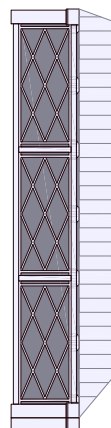
3



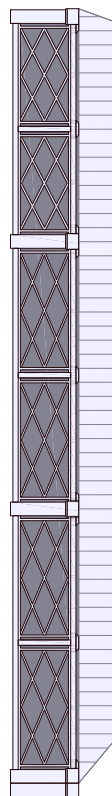
4



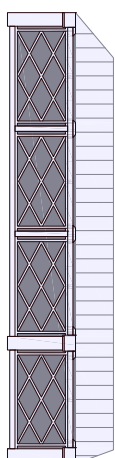
5



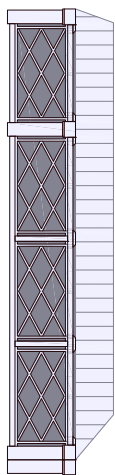
6



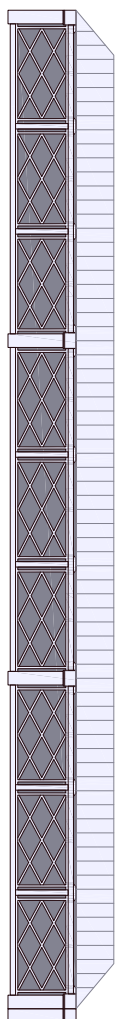
7



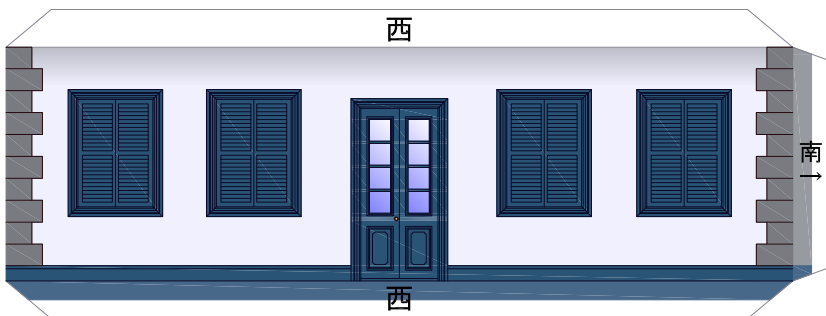
8



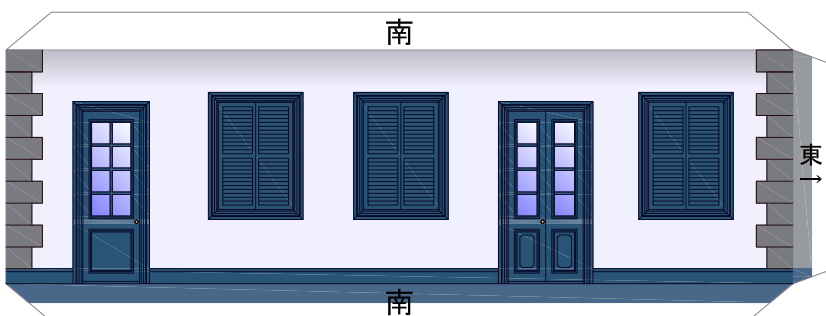
9



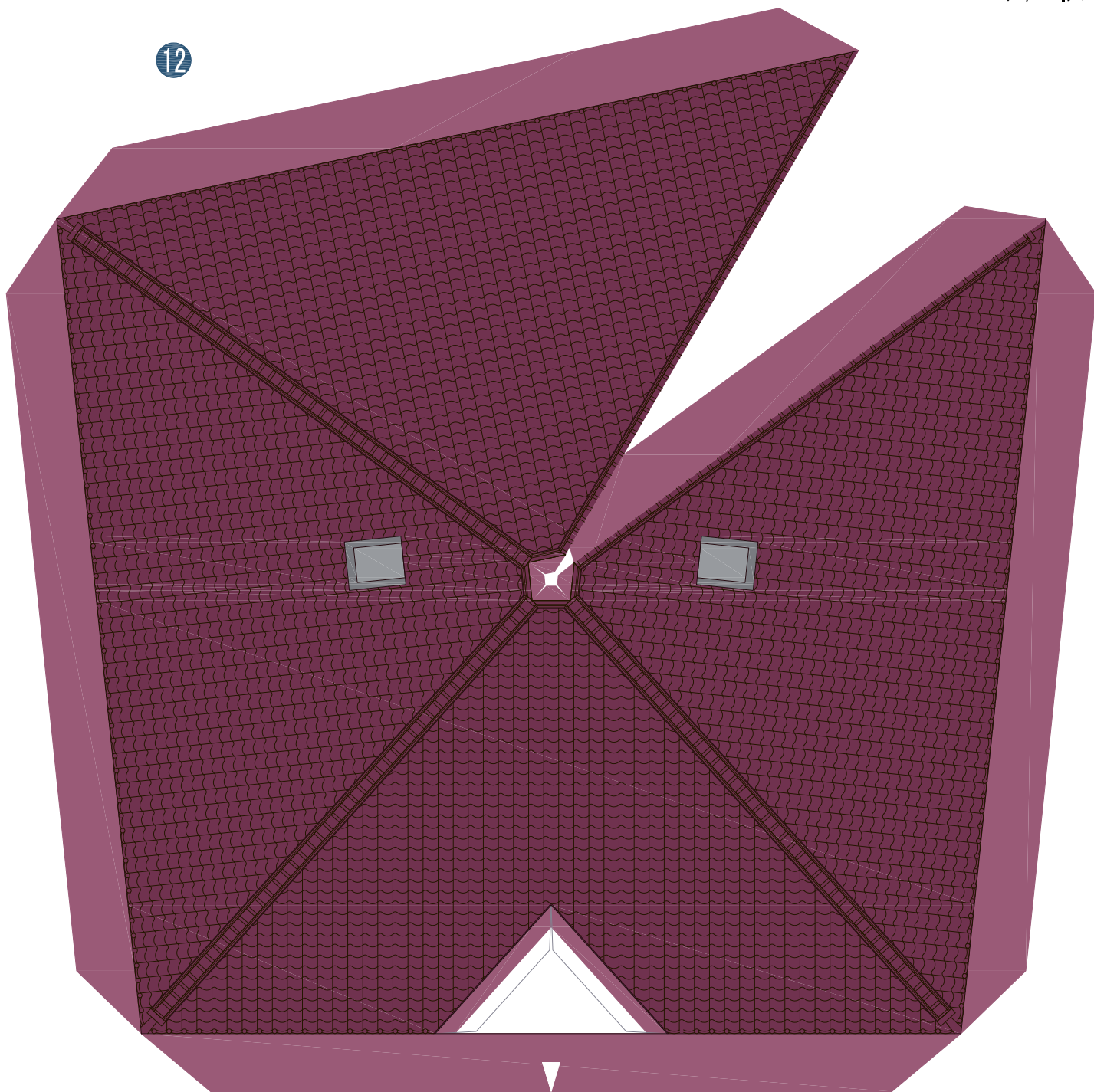
10



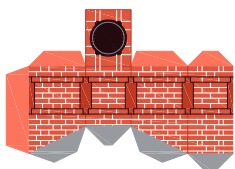
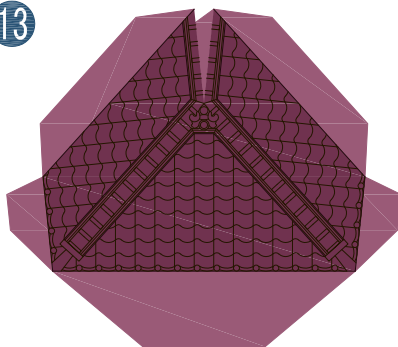
11



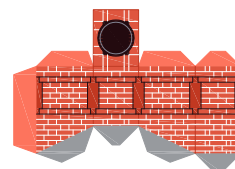
12



13



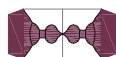
14



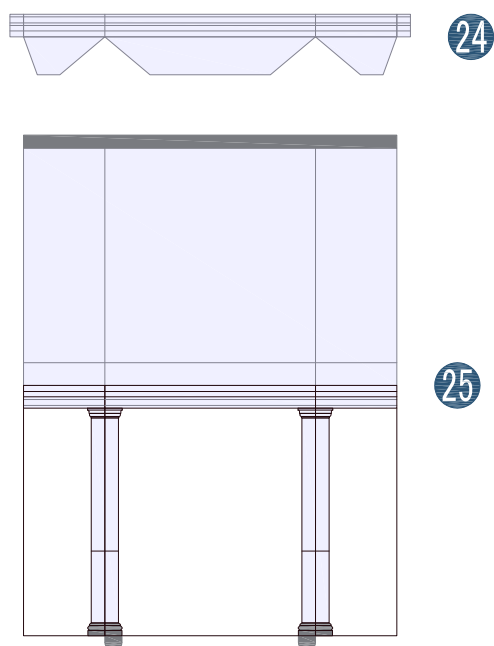
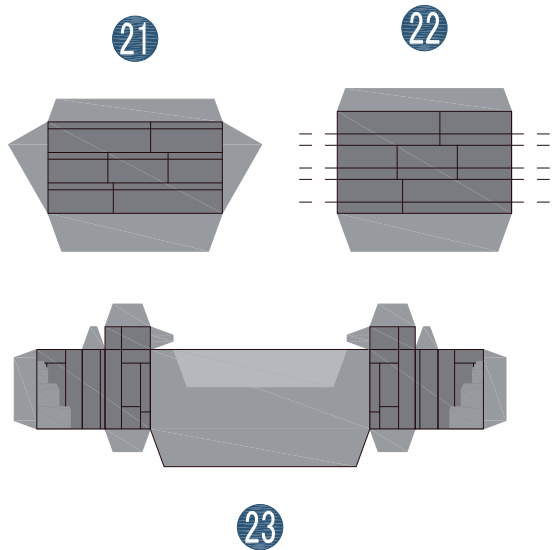
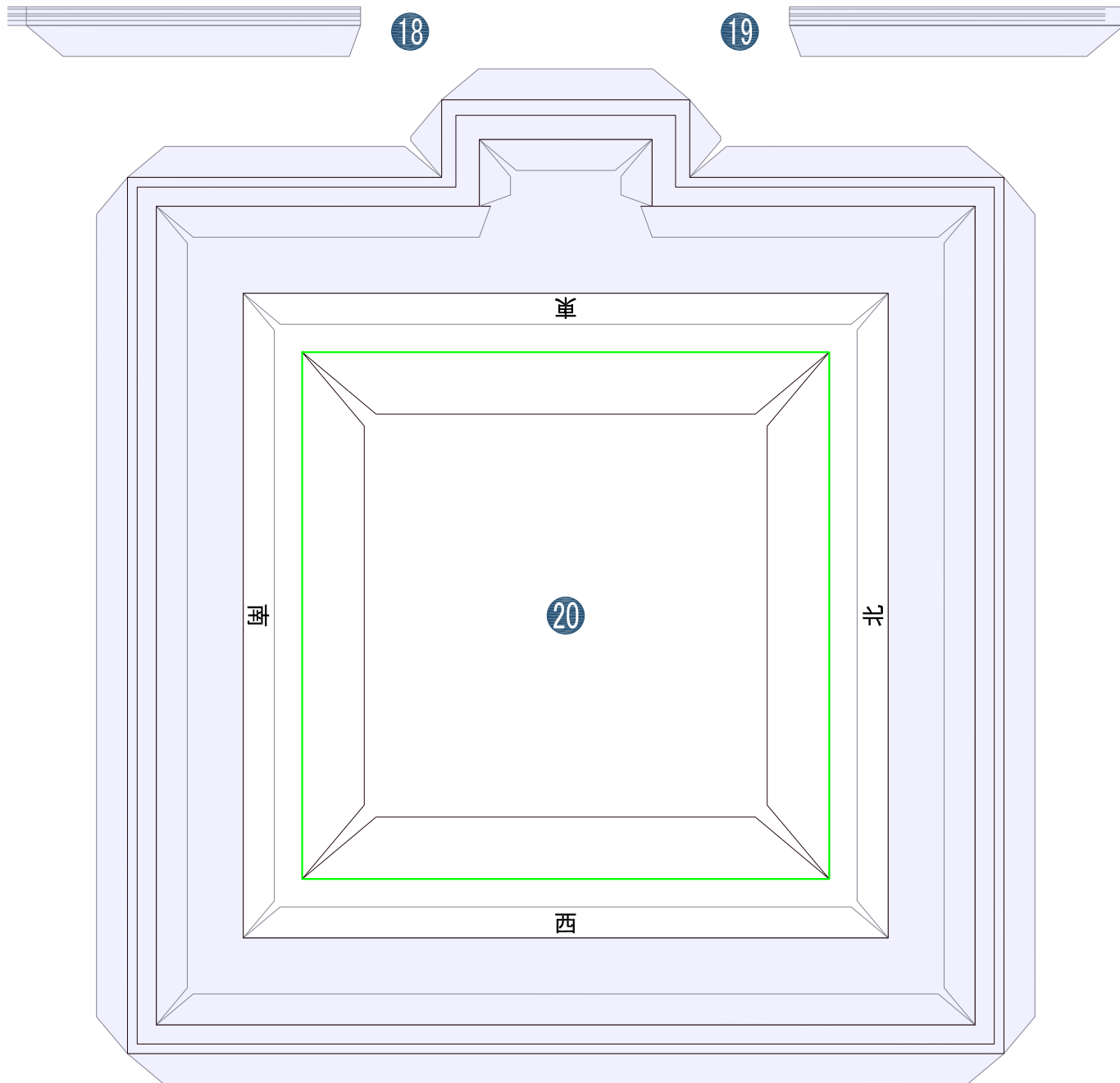
15



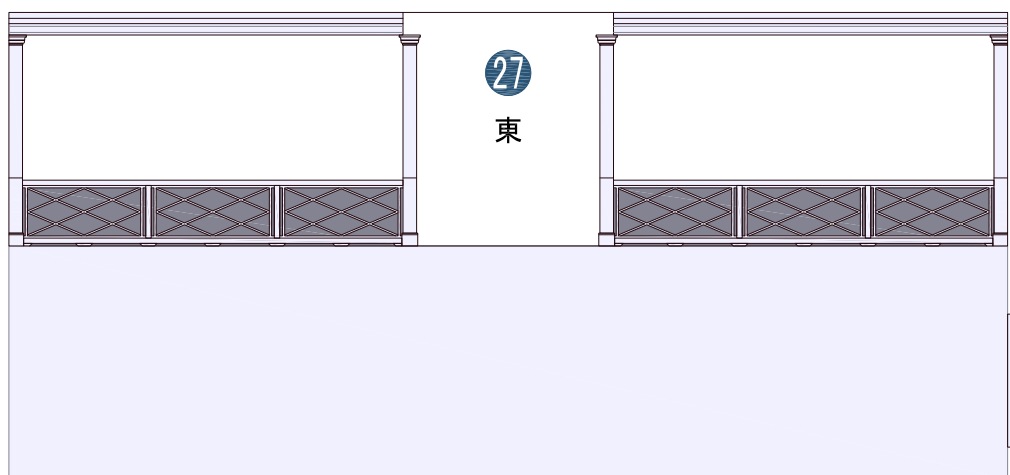
16



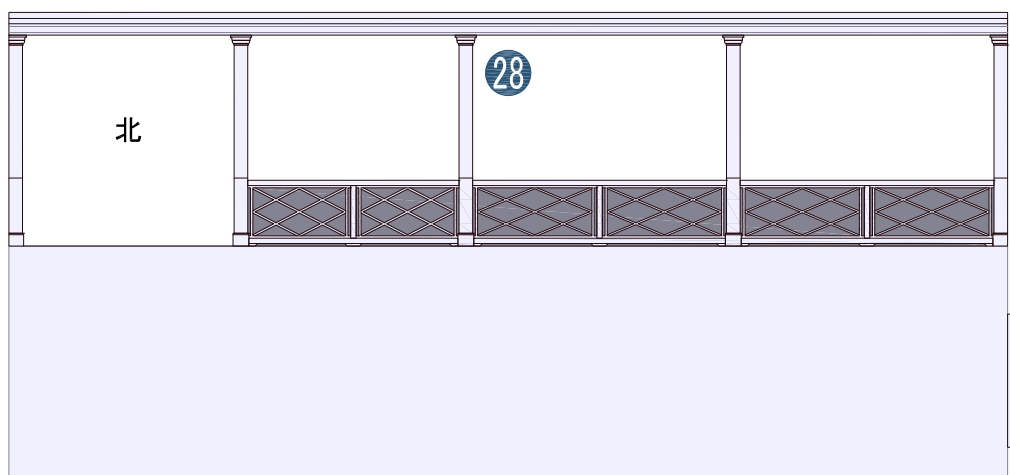
17



26



26



26

